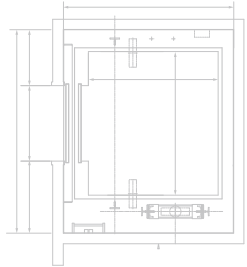
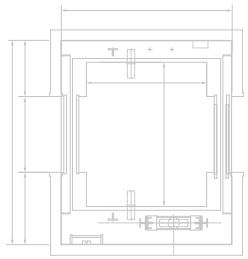


FUJITEC
SINGAPORE

fujitec.com.sg

INTEGRATED DRIVE UNIT (IDU)

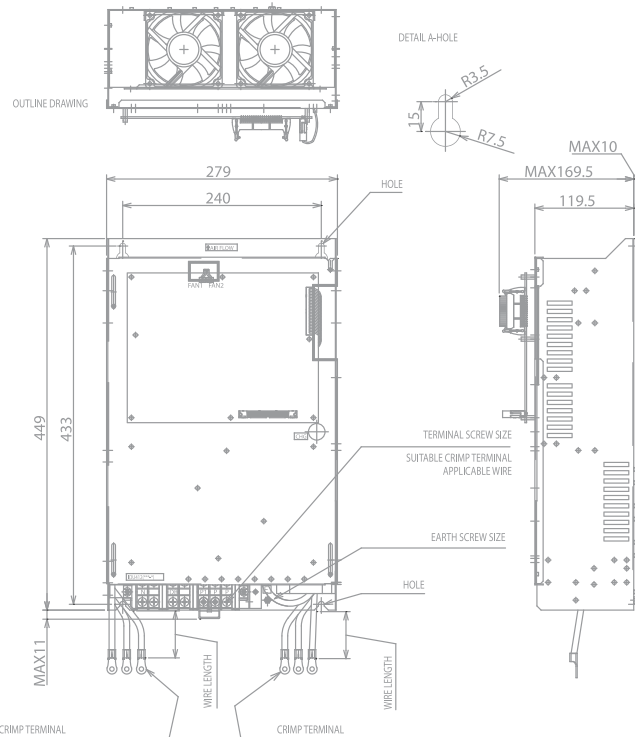
elevators
escalators
autowalks



NEXT GENERATION

INTEGRATED DRIVE UNIT

Throughout our history, Fujitec has pioneered state-of-the-art elevator control systems. Building on our proven and industry-endorsed platform, Fujitec now brings the latest enhancements to the market—the integrated drive unit (IDU). Our elevator control system is a next-generation product that utilises the most advanced technology, allowing Fujitec to offer excellent ride quality and dependability, consistent with and exceeding previous systems.



More Robust and Faster Processing System

IDU offers faster processing power, resulting in a smoother ride experience. Our latest dispatching software coupled with the faster processor reduces overall wait times that enable passengers to reach their destination more quickly.

Long-term Reliability

IDU targets system up-time and higher tenant and passenger satisfaction, allowing building professionals to rely on Fujitec to promote elevator performance as a marketable building characteristic.

Flexible Design

IDU's modern, flexible design allows for easy customisation to fit the vertical transportation needs of any new or existing building. Fujitec's advanced-engineered, compact system can be configured to the most stringent installation space requirements.

INTEGRATED DRIVE UNIT (IDU)



| Model name: IDU 412-xxx-4 | | | 013 | 017 | 023 | 027 | 032 | 039 | 048 | 055 | 064 | 080 |
|-------------------------------|---|--|--|--------|--------|---------|--------|--------|--|----------|----------|------|
| Part Number | | | 6511GAS | | | 6511GAV | | | 6511AACJ | 6511AADJ | 6511AAHJ | |
| Rated Output | Carrier Frequency 6kHz / 6kHz (Low Speed Area / High Speed Area) | Equivalent Continuous Current (RMS) | 13.2 A | 17.7 A | 23.2 A | 27.3 A | 32.3 A | 39.2 A | 48.2 A | 55 A | 64 A | 80 A |
| | Carrier Frequency 10kHz / 10kHz (Low Speed Area / High Speed Area) | | 9.0 A | 11.5 A | 16.0 A | 17.8 A | 20.7 A | 25.1 A | 39 A | 41 A | 55 A | - |
| | Output Voltage | | Output Voltage Exceeding Input Main Power Supply Voltage is not possible | | | | | | | | | |
| Input Power Supply | Main Power Supply (No. of Phase, Voltage, Frequency) | 3 phase, AC 380 to 460V (+10% to -15%), 50 / 60 Hz | | | | | | | 3 phase, AC 380 to 480V (+10% to -15%), 50 / 60 Hz | | | |
| | Control Source (Voltage, Consumption Current) | DC 24V +/- 15% | | | | | | | | | | |
| Brake Control | Regenerative Braking Voltage | DC 756V +/- 0.5% | | | | | | | | | | |
| DB Tr. Fault Detection | Detection Circuit | Built-In | | | | | | | | | | |
| Encoder Signal Input | Input Method | 5V Line Driver (A, B, Z phase) | | | | | | | | | | |
| | Maximum Frequency | 150 kHz | | | | | | | | | | |
| Controllable Motor | | | Permanent Magnet Synchronous Motor (PMSM), Induction Motor (IM) | | | | | | | | | |
| Protection Structure | | | IP00, Open Type | | | | | | | | | |
| Cooling System | | | Fan Cooling | | | | | | | | | |
| Weight | | | 8 kg | | | 13 kg | | 14 kg | 22 kg | 29.3 kg | | |

ZEXIA REXIA

GS ESCALATOR
8000-NX

GS8000-HV

GS AUTOWALK
8100

EZSHUTTLE
Destination Floor Guidance System

FUJITEC

FUJITEC SINGAPORE CORPN. LTD.

204 Bedok South Avenue 1
Singapore 469333

Main Line: +65 62416222

Fax: +65 64447626

Email: fujitec.fsp@sg.fujitec.com



fujitec.com.sg